



West Texas One Pass

Repair Parts Manual

For Model: 906-338 ONE PASS COTTON 8 ROW 40"



SAFETY FIRST
PREVENT ACCIDENTS BY "THINKING SAFETY"
IN UNLOADING, SETTING UP, MOVING, STORAGE
AND OPERATING ALL EQUIPMENT.

BB BIGHAM BROTHERS, INC.
806-745-0384 • 705 E. Slaton Road • P.O. Box 3338 • Lubbock, Texas 79452

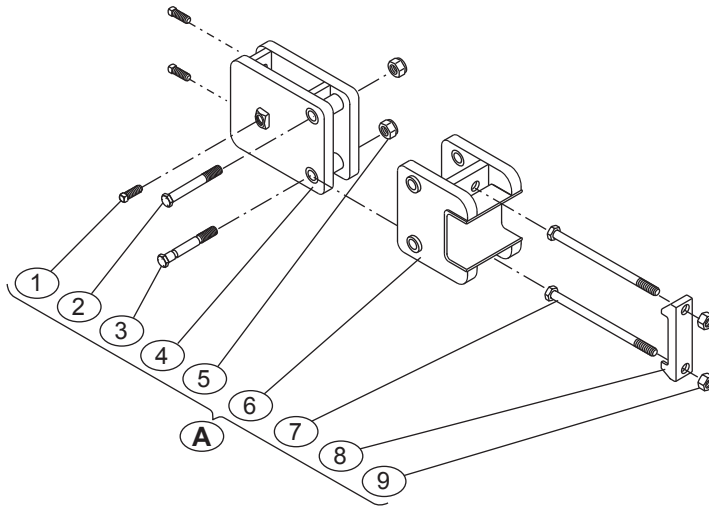
BIGHAM BROTHERS, INC.

(806) 745-0384

705 E. Slaton Rd.

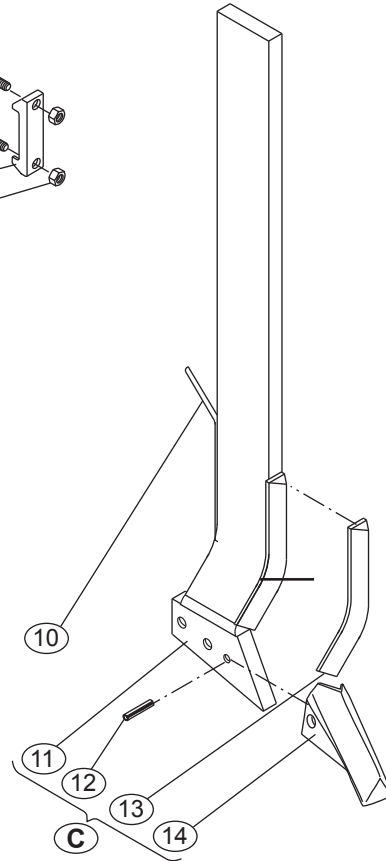
P.O. Box 3338

Lubbock, TX 79452



**Parts Diagram:
Shear Bolt Clamp
and Leg
Assembly**

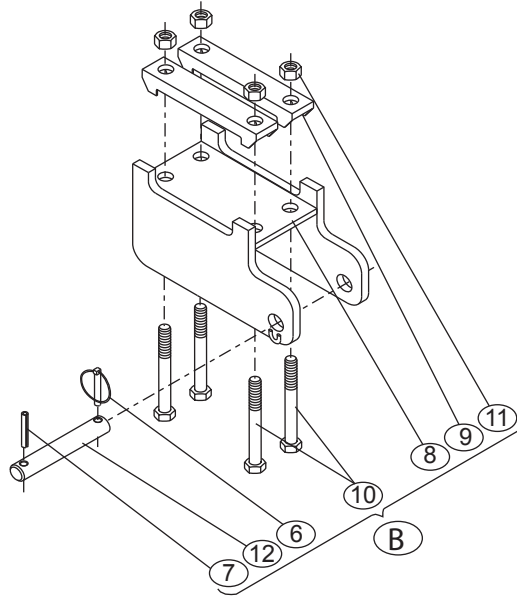
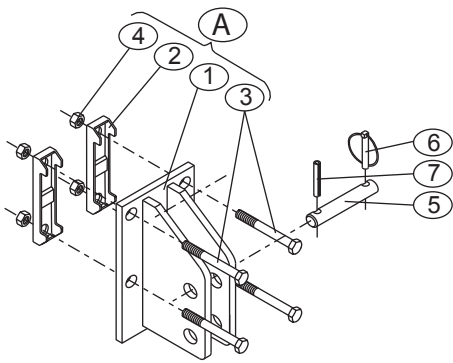
**Note: Leg identification as viewed
from the rear of the machine.**



Parts List:

Ref.	P/N	Description	Qty. Req. Per Assy.	Ref.	P/N	Description	Qty. Req. Per Assy.
A.	806-406	CLAMP, 4x4" - 1x4" (BREAKAWAY)		B.	709-022R	J-TILL LEG,RH 1X4 W/PT.,SHIN	
	806-407	CLAMP, 4x7" - 1x4" (BREAKAWAY)			709-022L	J-TILL LEG,LH 1X4 W/PT.,SHIN	
1.	606-1006Z	SET SCREW,SQ HD 5/8"x1-1/2" ZP	3	10.	116-200	PIPE, 1/8" SCHEDULE 40	1
2.	602-1020Z	BOLT, HCS 5/8"x5" (GR5) ZP	1	11.	310-316	WELD-ON TIP FOR BBI MEGATILL	1
3.	610-1020Z	SHEAR BOLT, ZP 5/8 x 5" (Reverse 2 & 3 For Mount on Front of Bar)	1	12.	617-054	PIN,ROLL 3/8"x1-1/2" ZP	1
4.	636-791	CLAMP, 1X4" BREAK AWAY (REAR)	1	13.	709-019	SHIN, CHROM CARB 1-1/4XD9" 45 DEG. (Welded on Leg)	1
5.	613-1005Z	NUT, HEX NYLOCK ZP 5/8"	2	14.	709-014	POINT, RIPPER CHROMIUM CARBIDE	1
6.	636-790	CLAMP, 4"BREAK AWAY (FRONT)	1				
	636-792	CLAMP, 7"BREAK AWAY (FRONT)"	1				
7.	601-1428Z	BOLT, HCS 7/8"x7" (GR2) ZP	2				
	609-1440Z	BOLT, HMB 7/8"x10" (GR2) ZP	2				
8.	628-400	CAP, 4" 7/8 & 1" BOLT HOLES	1				
	628-308	CAP, 7" BAR 1" BOLT HOLE (CAST)	1				
9.	611-1401Z	NUT,HEX ZP 7/8"	2				

**Parts Breakdown:
Three Point Hitch
Assembly**

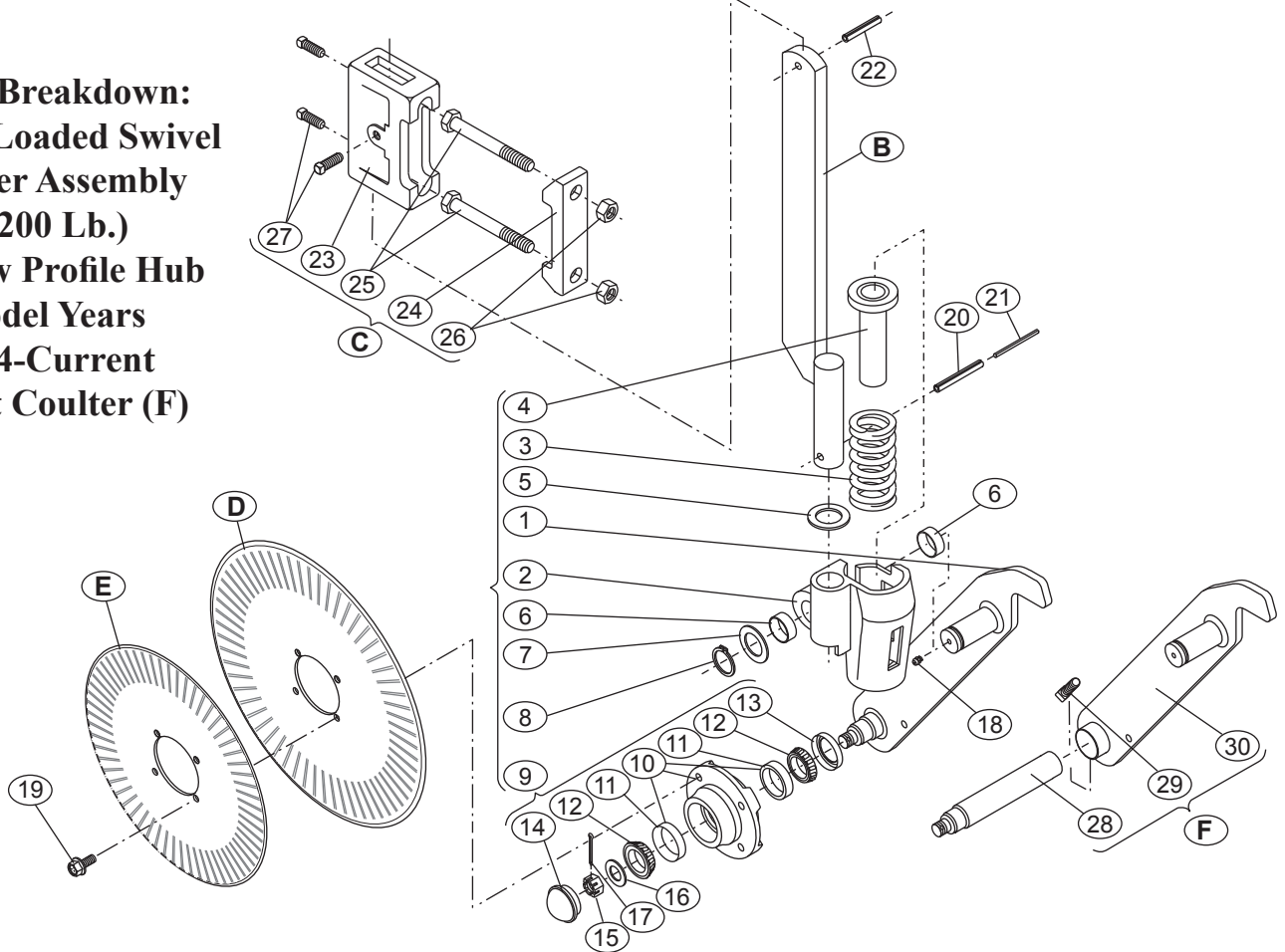


804-748 Hitch Assy., Cat. III 4 x 7" Bar (4" Drop)

Ref.	P/N	Description	Qty Req. Per Hitch	Ref.	P/N	Description	Qty Req. Per Hitch
A	804-304	Top Link Assy, 4"x4" Bar; 4" Drop		B.	804-510	Pull Point Assy., Cat.III 4 x 7 (4" Drop)	
1.	704-304	Bracket, Top Link Cat III 4" Drop	1	6.	617-105	Klik Pin, 7/16" x 2"	3
2.	628-400	Cap, 4" 7/8" & 1" Bolt Holes	2	7.	617-053	Pin, Roll 7/16" x 2-1/4"	3
3.	602-1426Z	Bolt, HCS ZP GR5 7/8" x 6-1/2"	4	8.	704-750	Bkt. Pull Point Cat.III 7" (4" Drop)	2
4.	611-1401Z	Nut, Hex ZP 7/8"	4	9.	628-308	Cap, Cast 7" HD	4
Top Link Pin				10.	602-1626Z	Bolt, HCS ZP GR5 1 x 6-1/2"	4
5.	617-190	Pin, Clevis Cat III Top	1	11.	611-1601Z	Nut, Hex ZP 1"	4
6.	617-053	Pin, Roll 7/16" x 2-1/4"	3	12.	617-196	Pin, Clevis ZP Cat. III Wide Pull Point	2
7.	617-105	Klik Pin, 7/16" x 2"	3				

BIGHAM BROTHERS, INC.

**Parts Breakdown:
Spring Loaded Swivel
Coulters Assembly
(1200 Lb.)
Narrow Profile Hub
Model Years
2004-Current
Offset Coulters (F)**



841-170 Coulters Assy, HD 20" Blade 4 x 7" Mount				841-175 Coulters Assy, HD 20" Offset 4 x 7" Mount			
Ref.	P/N	Description	Qty Req. Per Assy.	Ref.	P/N	Description	Qty Req. Per Assy.
A.	741-312	Arm, Hub, Hinge, And Spring Assy.		18.	617-009	Fitting, Grease 1/4"-28 UNF	1
1.	741-112	Arm And Spindle XHD/Nrw Hub	1	19.	607-0805	Bolt, Flange 1/2x1-1/4" 3/4 Hd. N.F.	4
2.	628-307	Hinge Casting, XHD	1	B.	741-103	Shank, 1-3/4" Rnd; 1x3 Flat (26")	1
3.	633-035	Spring, XHD	1	20.	617-059	Pin, Roll ZP 3/8x2-1/2"	1
4.	628-309	Spring Cap, XHD	1	21.	617-057	Pin, Roll ZP 7/32x2-1/2"	1
5.	616-1990	Bushing, Mach. 1/8"x1-3/4" (I.D.)	1	22.	617-052	Pin, Roll ZP 3/8x2"	1
6.	624-107	Bushing, 1-3/8" I.D.x 1"	2	C.	806-473	Clamp Assy., 4x7" for 1x3" Shank	
7.	616-1985	Bushing, Mach. 1/8"x1-3/8" (I.D.)	1	23.	628-700	Clamp Body, 4" for 1x3"	1
8.	622-853	Snap Ring, External 1-3/8"	1	24.	628-400	Cap, Cast 4" H.D.	1
9.	627-146	Hub Assy., 4 Hole Narrow Profile	-	25.	609-1438Z	Bolt, HMB ZP 7/8x9-1/2"	2
10.	627-145	Hub/Cups, HD Narr. Profile 4-Hole	1	26.	611-1410Z	Nut, Hex ZP 7/8"	2
11.	622-006	Cup, 67010 for 67048 Bearing	-	27.	606-1006Z	Set Screw, Sq. Hd. ZP 5/8x1-1/2"	3
12.	622-007	Bearing Cone, 67048	2	D.	630-012	Blade, (20" Fluted)	1
13.	623-001DL	Seal, 152357B Q633 Hub (Dbl. Lip)	1	E.	630-009	Blade, (17" Fluted)	-
14.	627-543	Dust Cap 4 Hole Nrwr Prof. Hub	1	F.	741-210	Arm/Spindle for Offset Coulters (841-175)	
15.	614-1405	Nut, Hex Slotted 7/8" NF	1	28.	627-248	Spindle, S.L. Coulters 13-3/4"	-
16.	616-1400	Bushing, Mach. 2" OD x .165 Thick	1	29.	606-1006Z	Set Screw, Sq HD 5/8"x1-1/2" ZP	2
17.	617-020	Pin, Cotter 5/32x1-1/2"	1	30.	741-108	Coulters Arm w/Sleeve Offset	-

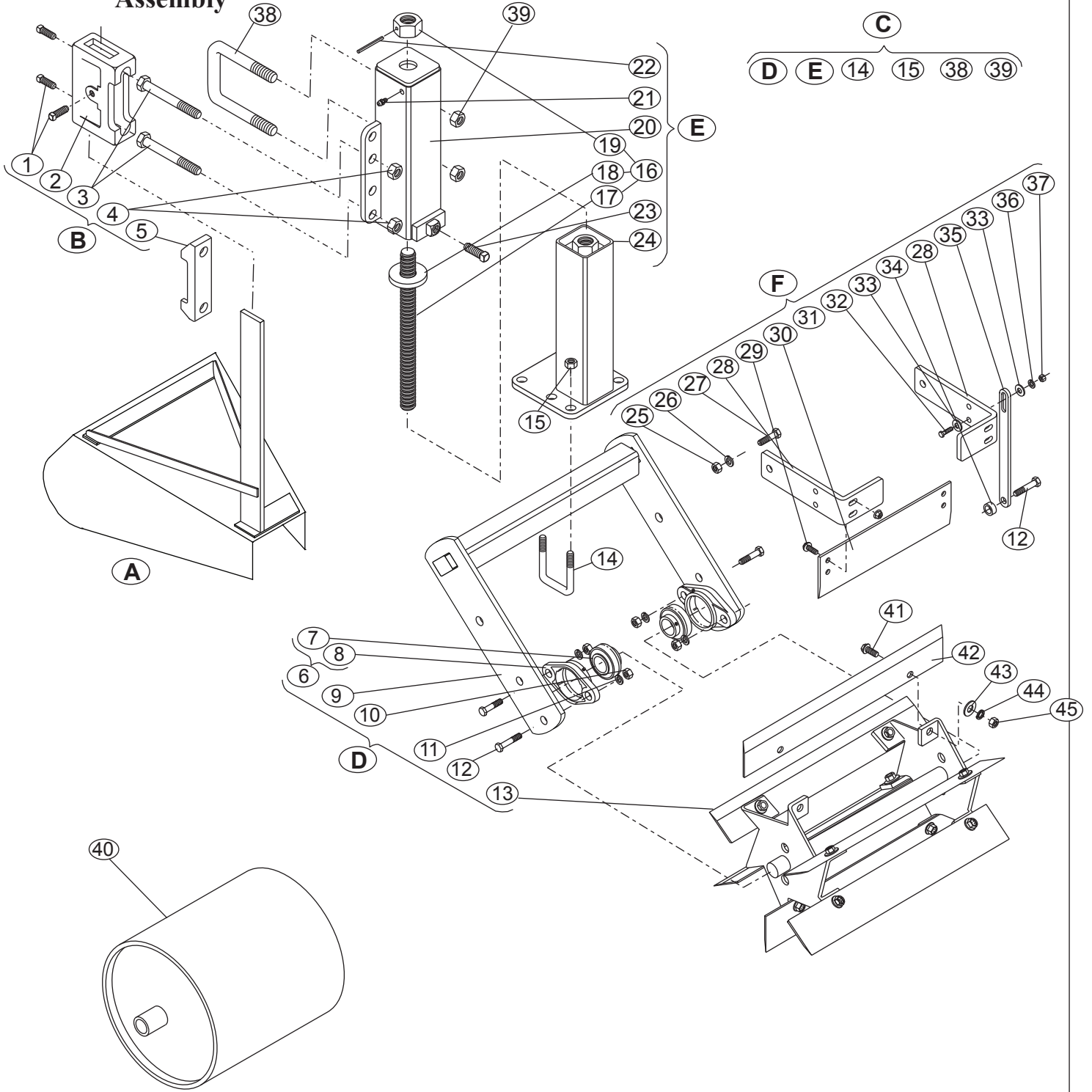
(806) 745-0384

705 E. Slaton Rd.

P.O. Box 3338

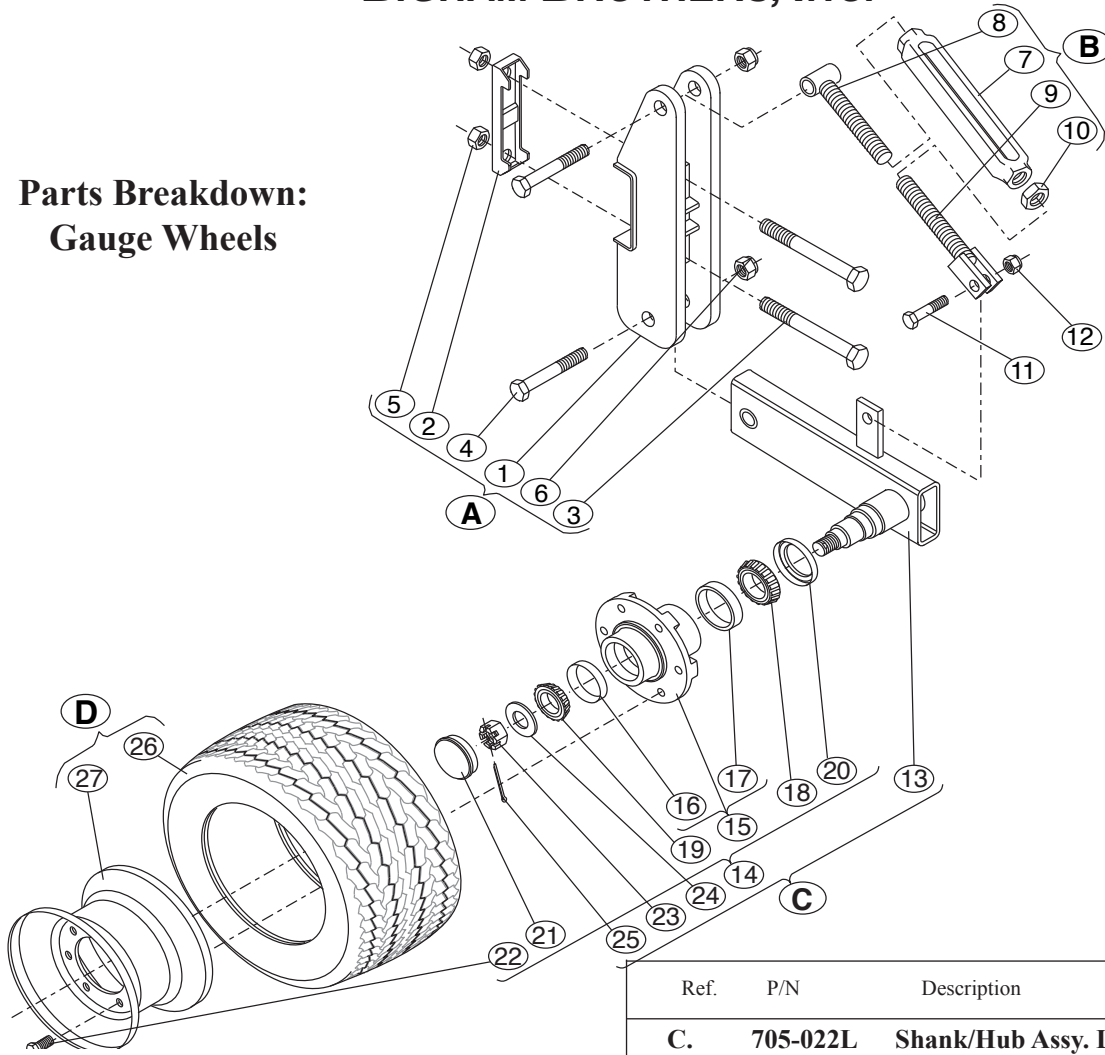
Lubbock, TX 79452

**Parts Breakdown:
Stalk Guide
Clamp
Roller/Jack
Assembly**



BIGHAM BROTHERS, INC.

Parts Breakdown: Gauge Wheels

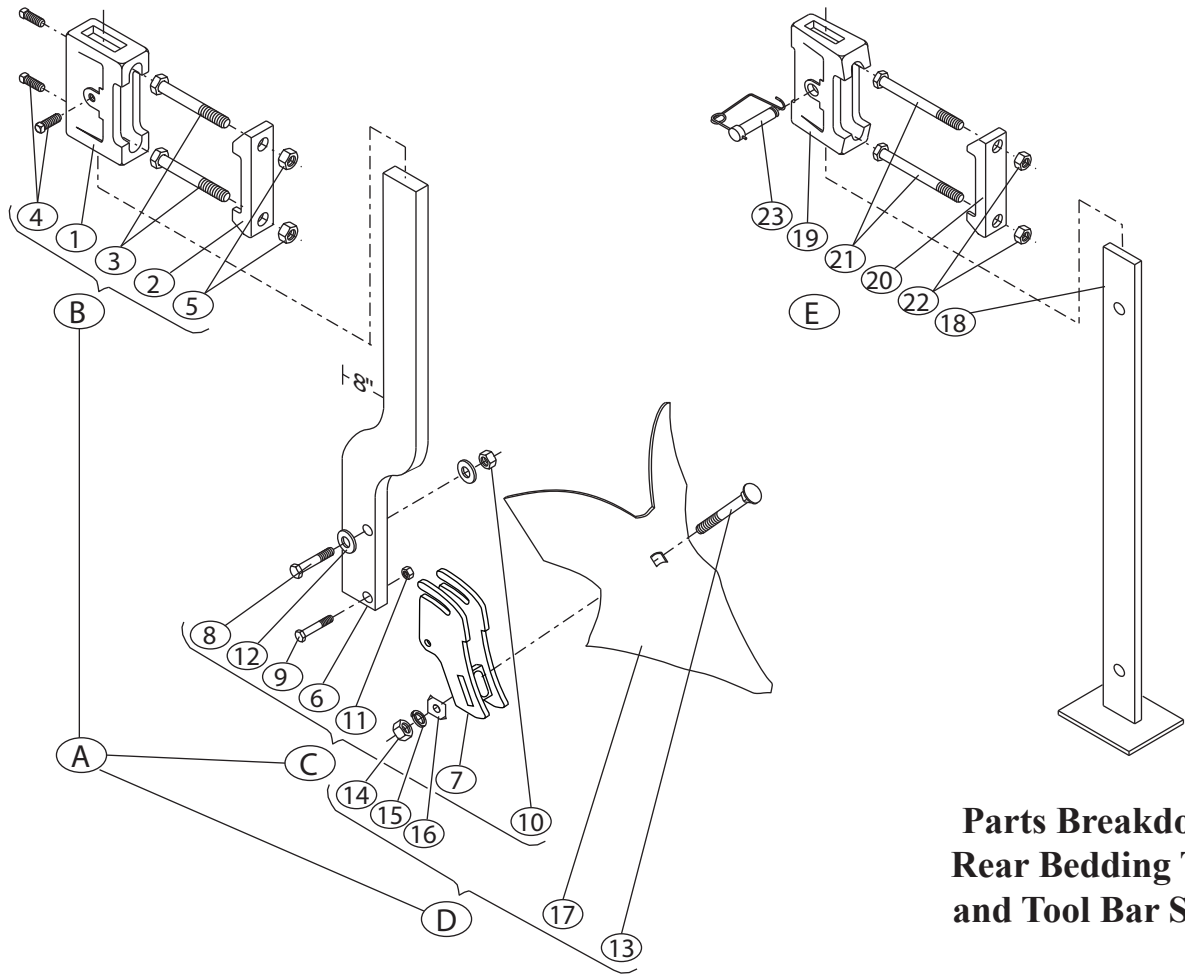


**805-205 Gauge Wheels, West Texas One Pass
4x4" Mount**

Ref.	P/N	Description	Qty Req. Per Set
C.	705-022L	Shank/Hub Assy. LH	1
	705-022R	Shank/Hub Assy. RH (Pictured)	1
13.	705-021L	Shank/Spindle, LH	
	705-021R	Shank/Spindle, RH (Pictured)	
14.	627-160	Hub Assy., 6 Hole Q888	
15.	627-159	Hub/Cups., 6 Hole Q888	
16.	622-006	Cup, 67010	
17.	622-008	Cup, 69310	
18.	622-009	Bearing Cone, 69349	
19.	622-007	Bearing Cone, 67048	
20.	623-002	Seal, Q888 Hub (16289)	
21.	627-560	Cap, Dirt Q888 Hub	
22.	607-0805Z	Bolt, Lug ZP 1/2 X 1-1/4"	
23.	614-1407	Nut, Hex Slotted 7/8" N.F.	
24.	616-1400	Bushing, Mach. 7/8" X 14 Ga.	
25.	617-020	Pin, Cotter 5/32 X 1-1/2"	
D.	705-006	Wheel & Tire, 20.5 x 8.00-10 10 Ply	2
25.	627-575	Tire, 20.5x8.00-10 Ply	
26.	627-480	Wheel, 6 Hole 10x6"	

Ref.	P/N	Description	Qty Req. Per Set
A.	805-104	Mount Assy., 4 x 4"	-
1.	705-047	Mount Bkt., 4"	2
2.	628-400	Cap, Cast 4" HD	2
3.	601-1428Z	Bolt, HCS ZP 7/8 x 7"	4
4.	601-1218Z	Bolt, HCS ZP 3/4 x 4-1/2"	4
5.	611-1401Z	Nut, Hex ZP 7/8"	4
6.	613-1200Z	Nut, Hex Nylock ZP 3/4"	4
B.	705-087	Turnbuckle, 1 x 6" G.W.	-
7.	617-094	Stud, 1 x 5-3/4" LH w/Bushing ZP	2
8.	617-095	Stud, 1 x 5-3/4" RH w//Ears ZP	2
9.	301-350	Body, Turnbuckle 1 x 6" ZP	2
10.	614-1601Z	Nut, Hex Jam 1" ZP	2
11.	601-1011Z	Bolt, HCS ZP 5/8 x 2-3/4"	2
12.	613-1005Z	Nut, Hex Nylock ZP 5/8"	2

BIGHAM BROTHERS, INC.



**Parts Breakdown:
Rear Bedding Tools
and Tool Bar Stand**

Ref.	P/N	Description	Qty Req. Per Set	Ref.	P/N	Description	Qty Req. Per Set
A.	870-204	Shank, Clamp & Buster BB Hi-Wing		D.	870-151	Update Kit, 1x3 No-Twist/348G	
B.	806-403	Clamp, 4x4 For 1x3 Shank		13.	604-1220Z	Bolt, Crg 3/4 x 5" (GR5) ZP	1
1.	628-700	Body, Clamp 4" 1x3 Shank	1	14.	611-1201Z	Nut, Hex ZP 3/4"	1
2.	628-400	Cap, 4" 7/8 & 1" Bolt Holes	1	15.	615-1200Z	Wshr., Lock ZP 3/4"	
3.	601-1424Z	Bolt, HCS 7/8"x6" (GR2) ZP	2	16.	638-578	Washer, Square #346 Buster	1
4.	606-1006Z	Set Scrw, SQR HD ZP 5/8x1-1/2"	3	17.	638-348G	Buster, 15" Bigham Hi-Wing	
5.	611-1401Z	Nut, Hex ZP 7/8"	2	E.	814-977	Stand Assy. 4 x 7" Tool Bar	
C.	705-304	Shank Assy, ROS 1x3 BB Hi-Wing Ft Pc		18.	636-975	Stand, 3/4 x 2-1/2 x 44"	1
6.	631-303H	Shank, 1x3 Rear Offset (Heat Treated)	1	19.	636-980	Clamp Body, 4" for 3/4" Shank	1
7.	636-156	Foot Piece, 1x3 Hi-Wing Buster	1	20.	628-400	Cap, 4" 7/8 & 1" Bolt Holes (Cast)	1
8.	602-1012Z	Bolt, HCS 5/8 x 3" (GR5) ZP	1	21.	609-1436Z	Bolt, HMB 7/8 x 9" (GR2) ZP	2
9.	602-0811Z	Bolt, HCS 1/2 x 2-3/4" (GR5) ZP	1	22.	611-1401Z	Nut, Hex ZP 7/8"	2
10.	611-1001Z	Nut, Hex ZP 5/8"	1	23.	617-129	Pin, Loxall 3/4 x 3-1/2" Usbl.	1
11.	611-0801Z	Nut, Hex ZP 1/2"	1				
12.	616-1002Z	Wshr., Flat Heavy ZP 5/8"	2				